

WHEN THE
SAINTS
GO
MARCHING IN





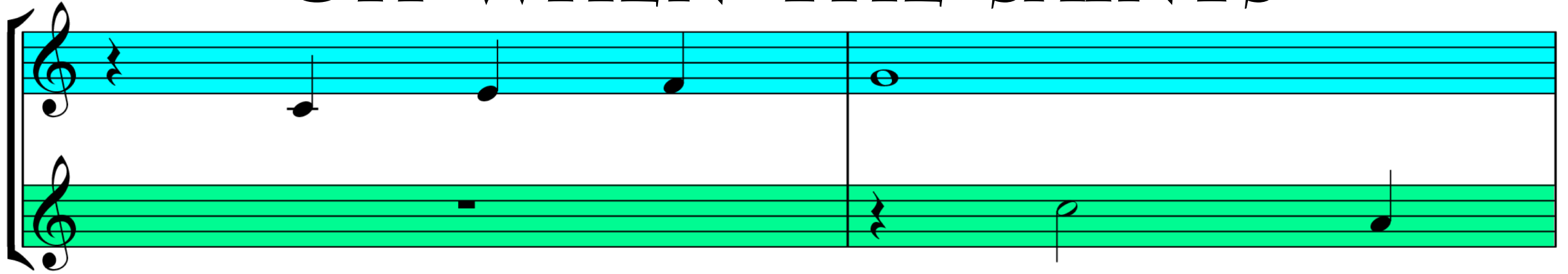
INTRODUCTION BY THE ORCHESTRA!

3

3



OH WHEN THE SAINTS



GO MARCHING IN



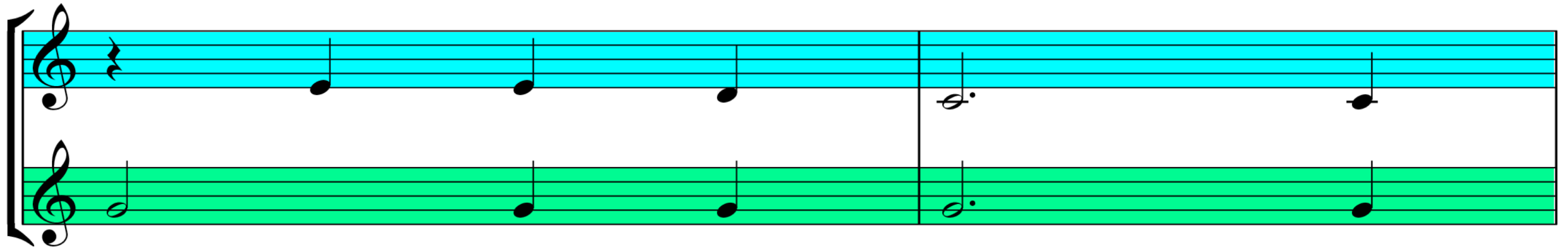
OH WHEN THE SAINTS GO



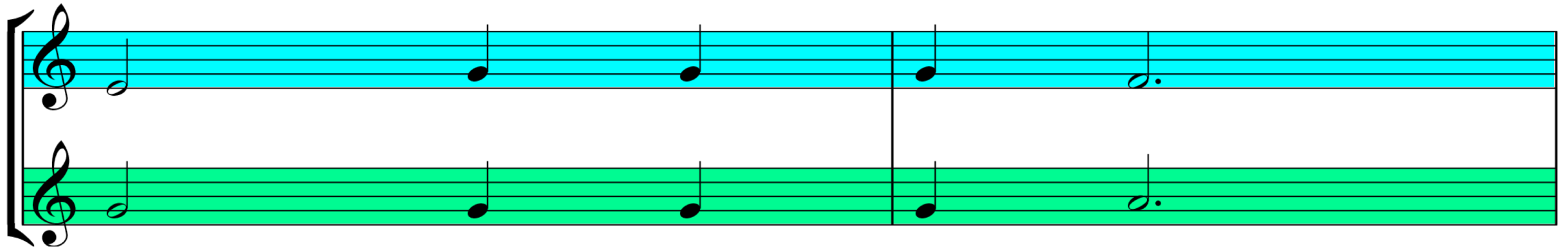
MARCHING IN



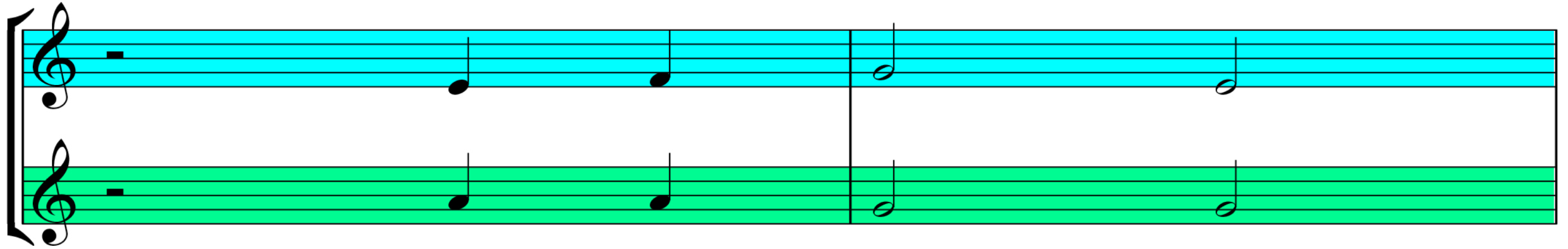
OH HOW I WANT TO



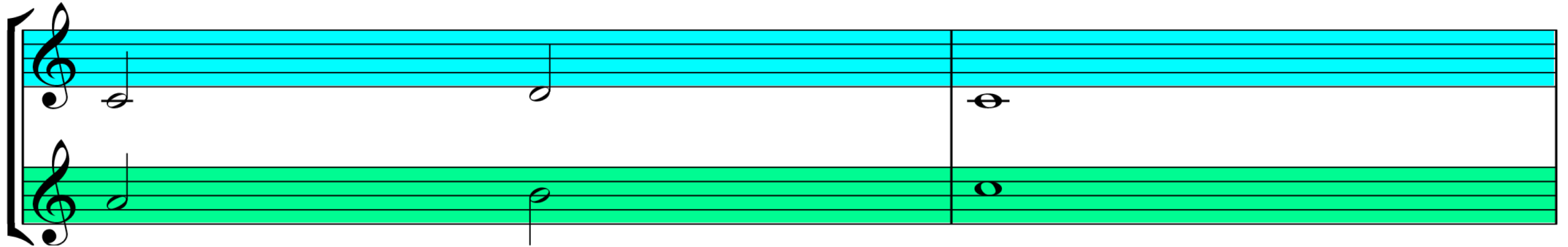
BE IN THAT NUMBER



WHEN THE SAINTS GO



GO MARCHING IN!



OH WHEN THE SAINTS

Musical notation for the first system, consisting of two staves. The top staff is highlighted in cyan and contains a treble clef, a key signature of one sharp (F#), and a 2/4 time signature. The melody consists of four quarter notes in the first measure (G4, A4, B4, C5) and a whole note in the second measure (C5). The bottom staff is highlighted in green and contains a treble clef. It has a whole rest in the first measure and a quarter note (G4) in the second measure.

GO MARCHING IN

Musical notation for the second system, consisting of two staves. The top staff is highlighted in cyan and contains a treble clef, a key signature of one sharp (F#), and a 2/4 time signature. The melody consists of four quarter notes in the first measure (G4, A4, B4, C5) and a whole note in the second measure (C5). The bottom staff is highlighted in green and contains a treble clef. It has a quarter note (G4) in the first measure, a whole rest in the second measure, and a quarter note (G4) in the third measure.

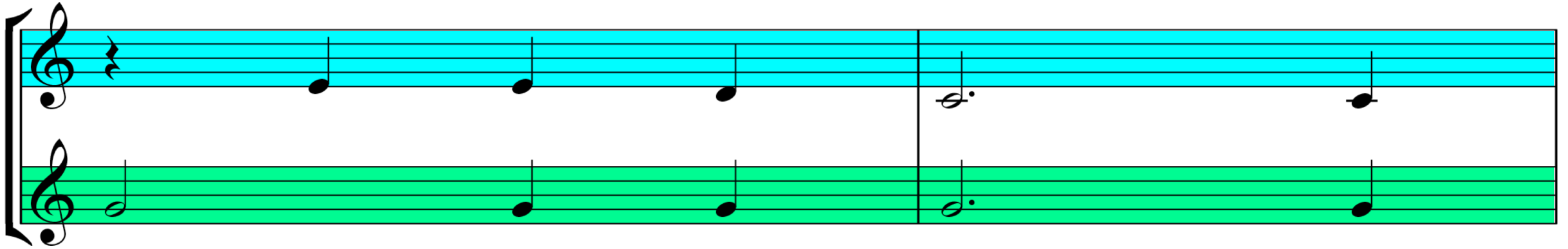
OH WHEN THE SAINTS GO



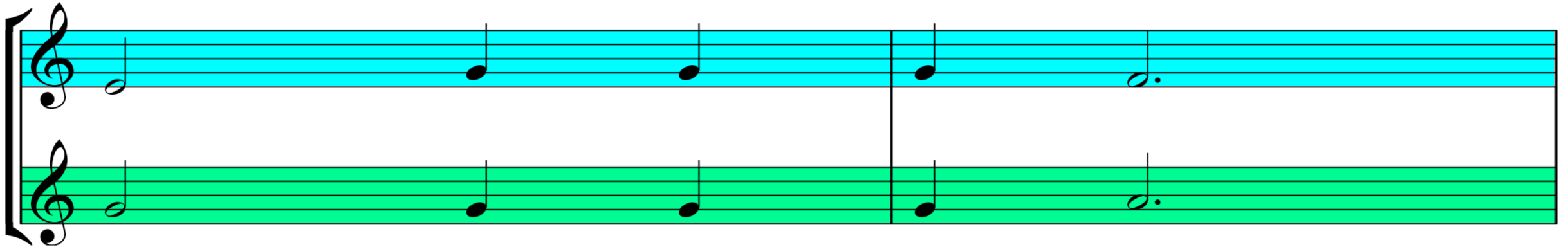
MARCHING IN



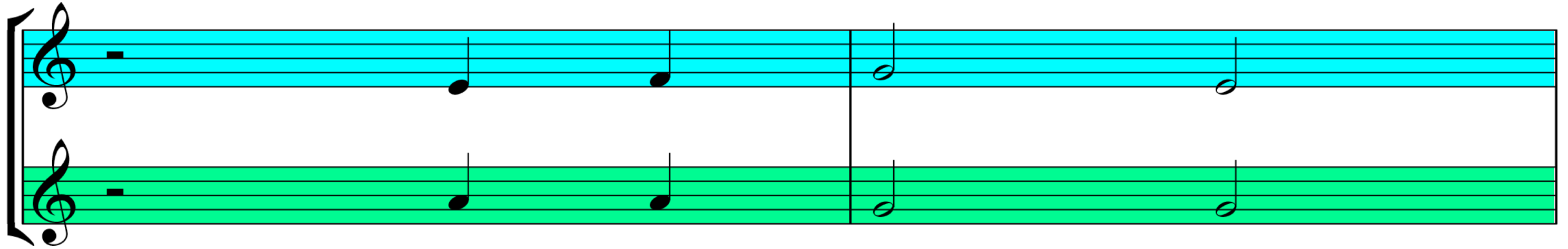
OH HOW I WANT TO



BE IN THAT NUMBER



WHEN THE SAINTS GO



GO MARCHING IN!

