



RECORDER MAE

&

THE GIANT SWING
MACHINE

JOHN CLAYTON







A musical staff in 4/4 time with a treble clef and a key signature of one sharp (F#). The melody consists of quarter notes on G4, A4, B4, and C5, followed by a half note on C5, and then a quarter rest followed by a half note on C5. Below the staff are icons representing the corresponding actions: blue sneakers for the first note, legs for the second, hands for the third, legs for the fourth, and a sneaker for the final note.





Musical notation on a staff with a treble clef and a key signature of one sharp (F#). The melody consists of eight quarter notes followed by a quarter rest and a half rest. Below the staff are illustrations of blue sneakers, legs, and hands.

Staff Note	Illustration
Quarter Note 1	Blue sneakers
Quarter Note 2	Blue sneakers
Quarter Note 3	Legs
Quarter Note 4	Legs
Quarter Note 5	Hands
Quarter Note 6	Hands
Quarter Note 7	Legs
Quarter Note 8	Legs
Quarter Rest	Blue sneaker
Half Rest	





A musical notation system on a white background. It consists of a single staff with a treble clef and a key signature of one sharp (F#). The melody is composed of several notes: a quarter note on G4, a quarter note on A4, a quarter note on B4, a quarter note on C5, a quarter note on B4, a quarter note on A4, a quarter note on G4, a quarter note on F#4, a quarter note on E4, a quarter note on D4, and a quarter note on C4. Below the staff, there are four groups of icons corresponding to the notes: 1. Two hands clapping (under G4 and A4). 2. Two pairs of legs in blue sneakers (under B4 and C5). 3. Two pairs of legs in blue sneakers (under B4 and A4). 4. Two hands clapping (under G4 and F#4). The last two notes (E4 and D4) are not accompanied by icons.





A musical staff with a treble clef and a key signature of one sharp (F#). The melody consists of a sequence of notes: G4, A4, B4, C5, D5, E5, F#5, G5, A5, B5, C6, D6, E6, F#6, G6, A6, B6, C7. Below the staff are icons representing actions: clapping hands, a leg with a blue sneaker, and another leg with a blue sneaker.





A musical notation system consisting of a single staff with a treble clef and a key signature of one sharp (F#). The melody is composed of eight quarter notes, followed by a quarter rest, and then two eighth notes. Below the staff, there are icons representing choreography: a pair of blue sneakers, a pair of legs in blue pants and white socks, two hands clapping, another pair of legs, and a single blue sneaker. The icons are positioned directly under the notes they correspond to: the first pair of sneakers is under the first note, the first pair of legs is under the second note, the clapping hands are under the third and fourth notes, the second pair of legs is under the fifth and sixth notes, and the single sneaker is under the seventh note. The eighth note and the following rest and eighth notes do not have corresponding icons.





A musical staff in treble clef with a key signature of one sharp (F#). The melody consists of eight quarter notes, followed by a quarter rest, and then a half note. Below the staff are illustrations corresponding to the notes: a pair of blue sneakers, legs in blue sneakers, hands clapping, legs in blue sneakers, and a single blue sneaker.





A musical notation system on a five-line staff. The key signature is one sharp (F#) and the time signature is not explicitly shown but implied by the note values. The melody consists of the following notes: a quarter note on G4, a quarter note on A4, a quarter note on B4, a quarter note on C5, a quarter note on B4, a quarter note on A4, a quarter note on G4, a quarter note on F#4, a quarter note on E4, a quarter note on D4, a quarter note on C4, and a quarter note on B3. Below the staff, there are four groups of icons corresponding to the notes: 1. Two pairs of hands clapping. 2. Two pairs of legs wearing blue sneakers. 3. Two pairs of legs wearing blue sneakers. 4. One pair of hands clapping.





Musical notation on a staff with a treble clef and a key signature of one sharp (F#). The melody consists of eight quarter notes: G4, A4, B4, C5, B4, A4, G4, and F#4. The final note is followed by a fermata. Below the staff are icons representing actions: clapping hands, a blue sneaker, a leg in a blue sock, and another blue sneaker.













A musical notation system on a single staff. The key signature is one sharp (F#) and the time signature is 4/4. The melody consists of the following notes: a quarter note on G4, a quarter note on A4, a quarter note on B4, a quarter note on C5, a quarter note on B4, a quarter note on A4, a quarter note on G4, a quarter note on F#4, a quarter note on E4, a quarter note on D4, and a quarter note on C4. Below the staff, there are icons corresponding to the notes: a pair of blue sneakers under G4, a pair of legs under A4, two hands under B4, a pair of legs under C5, a pair of blue sneakers under B4, a pair of legs under A4, a pair of blue sneakers under G4, and a pair of blue sneakers under F#4. The notes E4 and D4 are marked with a fermata, and the final note C4 has a fermata and a small black square below it.





A musical staff in treble clef with a key signature of one sharp (F#). The melody consists of the following notes: G4, A4, B4, C5, D5, E5, F#5, G5, A5, B5, C6, D6, E6, F#6, G6. The notes are grouped into measures: the first four notes are in the first measure, the next four notes are in the second measure, the next two notes are in the third measure, and the final note is in the fourth measure. Below the staff, there are illustrations corresponding to the notes: a pair of blue sneakers (G4), a pair of legs in blue sneakers (A4), two hands clapping (B4), a pair of legs in blue sneakers (C5), a pair of blue sneakers (D5), a pair of legs in blue sneakers (E5), a pair of hands clapping (F#5), a pair of legs in blue sneakers (G5), a pair of blue sneakers (A5), a pair of legs in blue sneakers (B5), a pair of hands clapping (C6), a pair of legs in blue sneakers (D6), a pair of blue sneakers (E6), a pair of hands clapping (F#6), and a pair of legs in blue sneakers (G6).





A musical staff with a treble clef and a sharp sign (F#). The staff contains a sequence of notes: a quarter note on G4, a quarter note on A4, a quarter note on B4, a quarter note on C5, a quarter note on B4, a quarter note on A4, a quarter note on G4, a quarter note on F#4, a quarter note on E4, and a quarter note on D4. Below the staff are icons representing hand clapping and leg kicking.

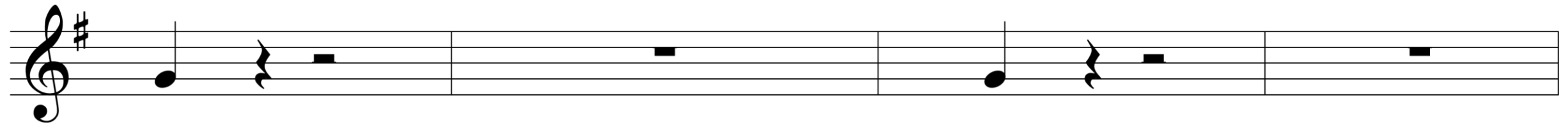
Below the staff, there are icons representing hand clapping and leg kicking. The first two notes (G4 and A4) correspond to two hand clapping icons. The next four notes (B4, C5, B4, A4) correspond to two pairs of leg kicking icons. The final three notes (G4, F#4, E4) correspond to one hand clapping icon.





A musical staff with a treble clef and a key signature of one sharp (F#). The melody consists of a sequence of notes: G4, A4, B4, C5, D5, E5, F#5, G5, A5, B5, C6, D6, E6, F#6, G6, A6, B6, C7. Below the staff are icons representing actions: clapping hands, blue sneakers, and legs in blue pants and white socks.







**NOW IMPROVISE YOUR
OWN ENDING!**